



**Welcome to**  
**Ralph Butterfield**  
**Lower Key Stage 2 classes**  
**September 2022**



# Ralph Butterfield Primary School



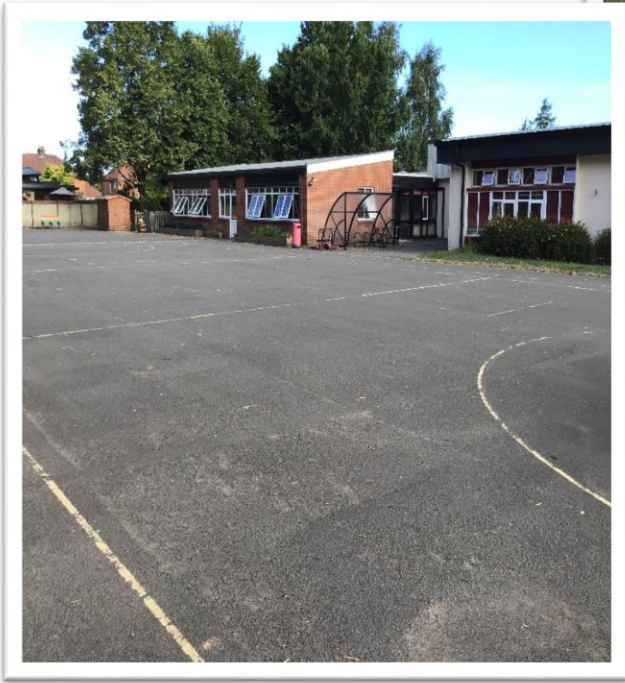


# School entrance and gate





# Through the gate and across the playground



Class 6 and 8



Class 7

Walk across the playground to the main building where your teacher will welcome you on a morning.



# Good morning Class 6 entrance





# Good morning Class 7 entrance





# Good morning Class 8 entrance

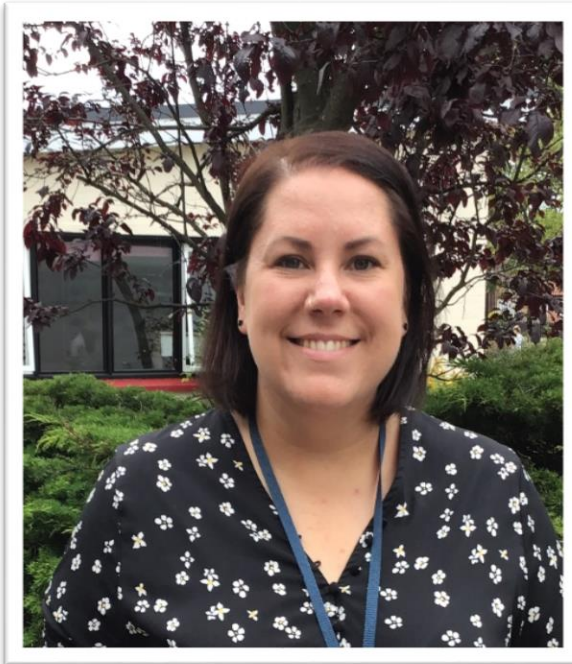




# Adults



**Miss Clapham**  
**Class 6 - Teacher**



**Miss Hodgson**  
**Class 7 - Teacher**



**Mr Daniel**  
**Class 8 - Teacher**





# Adults



**Miss Dawson**  
**Teaching Assistant**

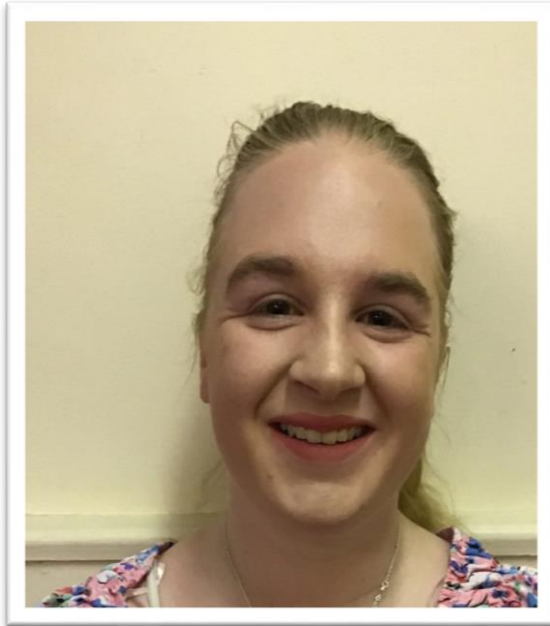


**Mrs Newsome**  
**Teaching Assistant**

All our fantastic adults are very friendly and will support you in school.



# Adults



**Miss Moss**  
**Teaching Assistant**



**Mrs Craig**  
**Teaching Assistant**

All our fantastic adults are very friendly and will support you in school.

# Lockers



Every child in Lower Key Stage 2 is provided with a locker to store their things in. Your locker will have your name on and a picture that you have created.

# Class 6 Classroom





# Class 7 Classroom

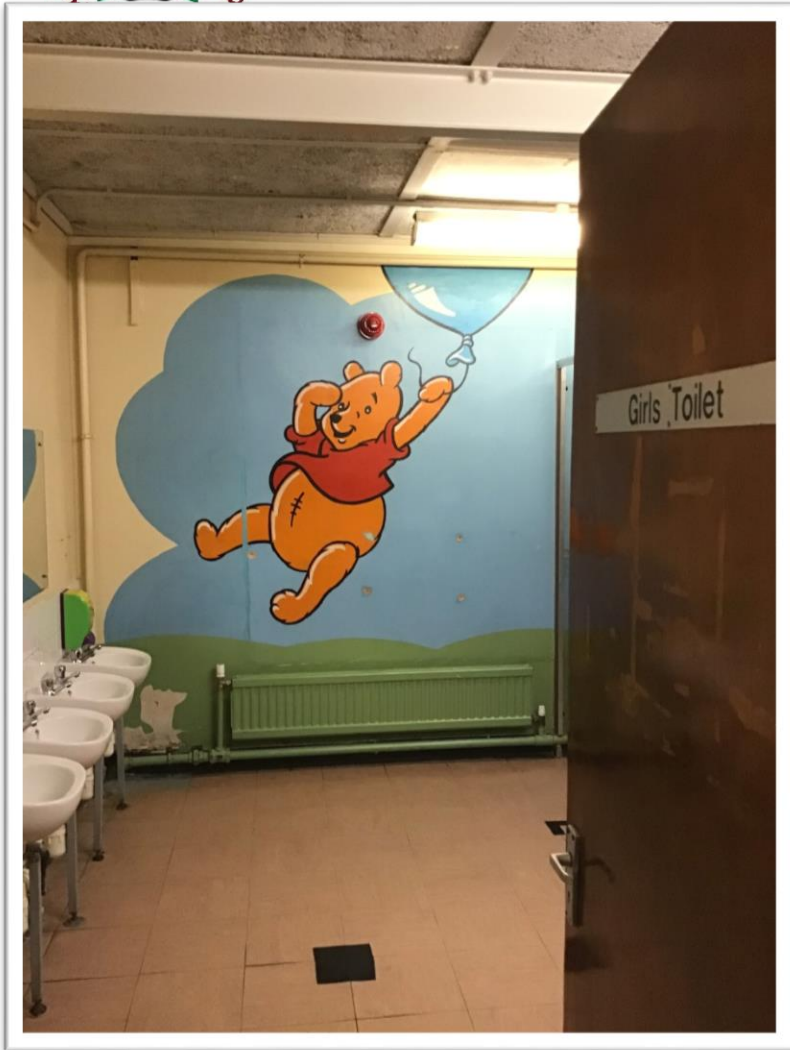


# Class 8 Classroom





# Toilets



These are our girls' and boys' toilets.



# School Rules



## Our School Rules

**Be Ready**



**Be Respectful**



**Be Safe**



Adults in school will help you to remember our 3 overarching school rules.



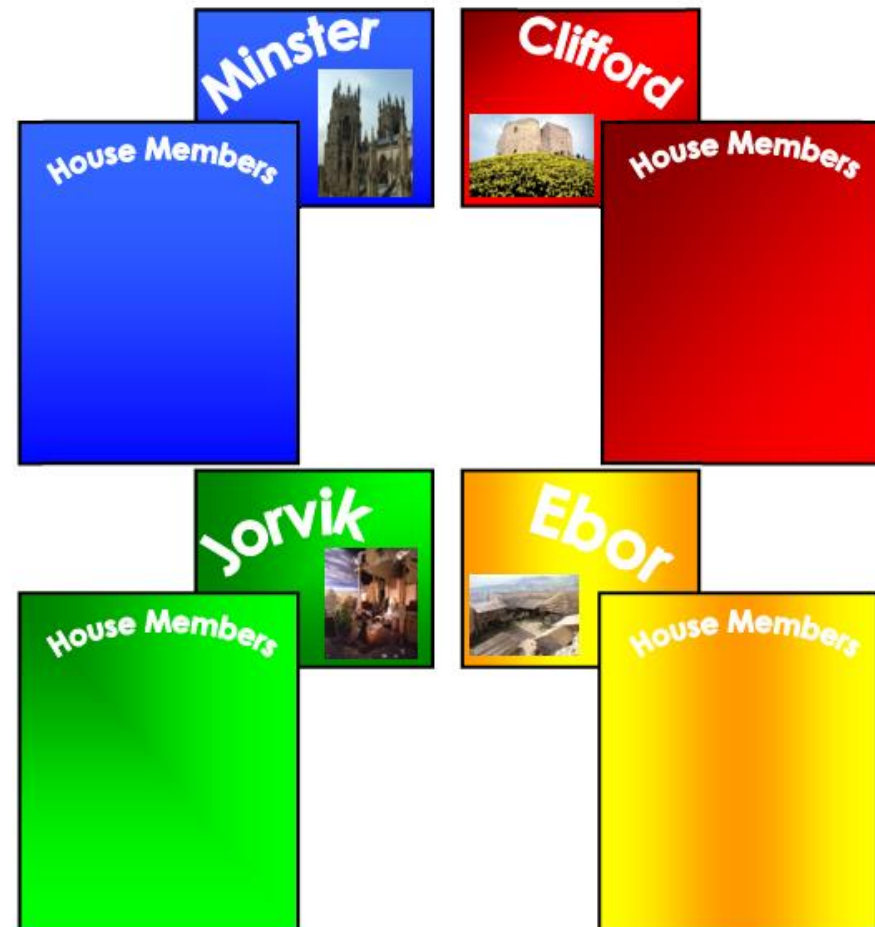


# House Points

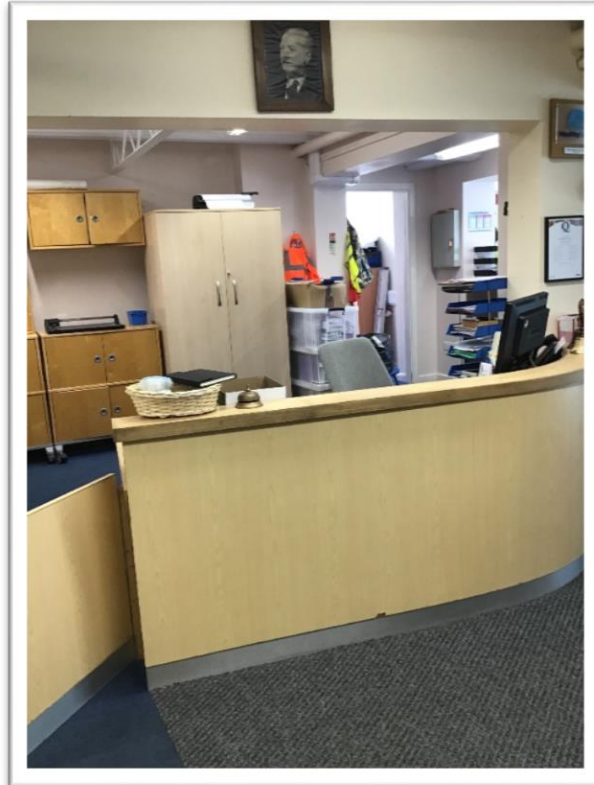


Ralph Butterfield Primary School  
The race for the House Point Cup

Everyone will be given a house team. You will be given house points for your great work, super behaviour and making positive choices.



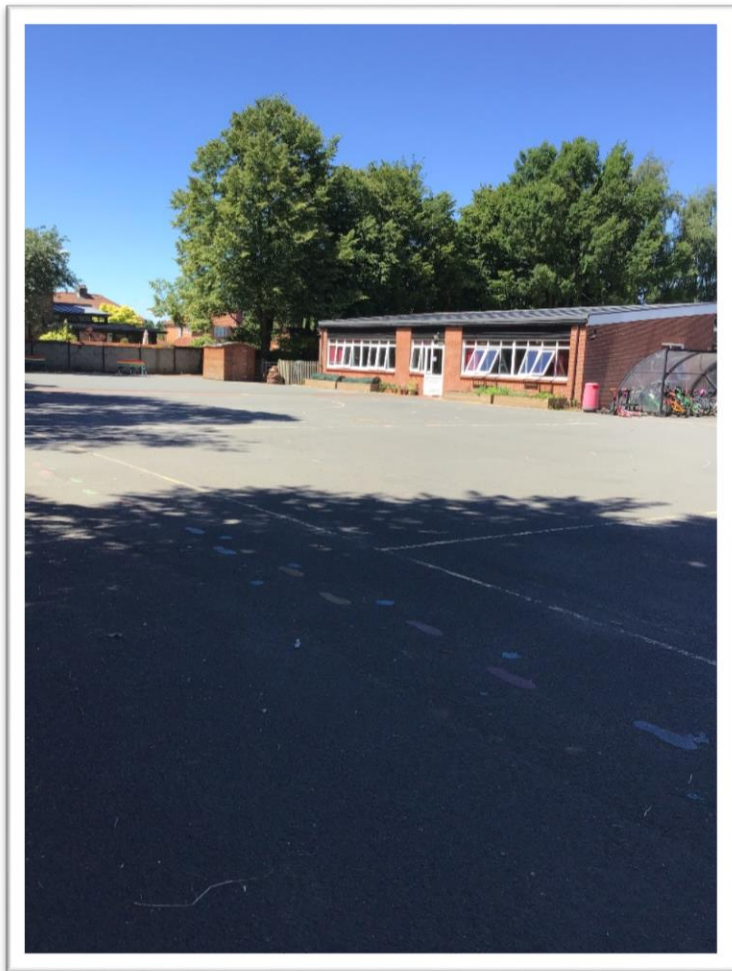
# Office/First Aid



If you require first aid or have any medical needs, you would be directed by a member of staff to the office and first aid room where you would be cared for.



# Playtime



You will play on the playground or field at playtime depending on the time of year.



# Bike & Scooter Shelter



Your bike or scooter can be stored in the bike/scooter shelters on the playground. There is one near the entrance of each classroom.



# Lunchtime



You will eat your lunch in the hall.  
You can have a hot dinner or a packed lunch.



# School Dinners



School dinners are collected at the hatch through these doors.



# Assembly and PE



Our hall is also used for PE lessons and assemblies.





# Ralph Butterfield

## A fun place to be and learn



We are all looking forward to you continuing your learning with us and being part of the Lower Key Stage Two team.