



Welcome to

Ralph Butterfield Primary

School

Upper Key Stage 2 Classes

September 2025



Ralph Butterfield Primary School



School entrance and gate





Welcome



Miss Banbury, our Headteacher, and many other school staff are really looking forward to welcoming you to our school.



Good morning



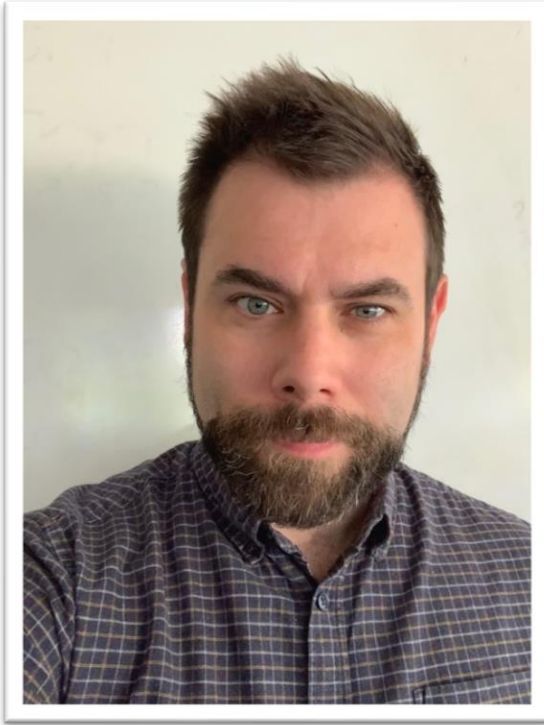
Class 9 and Class 11
enter through this
door.



Class 10 walk round the
side of the building and
then enter through this
door.



Adults



Mr Tod
Class 9 - Teacher



Mr Bennett
Class 11 - Teacher



Adults



Mrs Stephenson
Class 10 - Teacher



Adults



Mrs Aspery
HLTA



Mr Keaney
Teaching Assistant



Mrs Kelly
Teaching Assistant

All our fantastic adults are at school to support you.



Adults



Mrs Craig
Teaching Assistant



Mrs Orr
Teaching Assistant

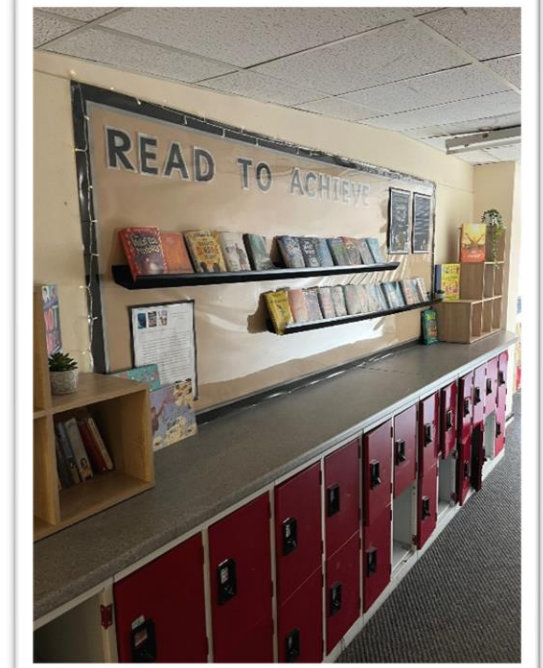
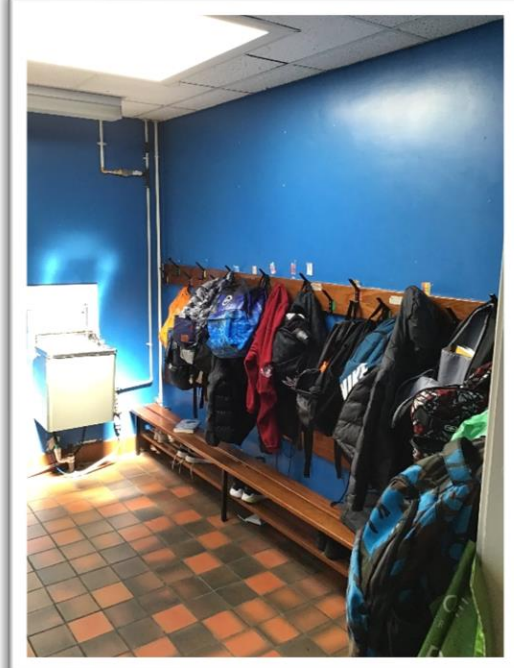
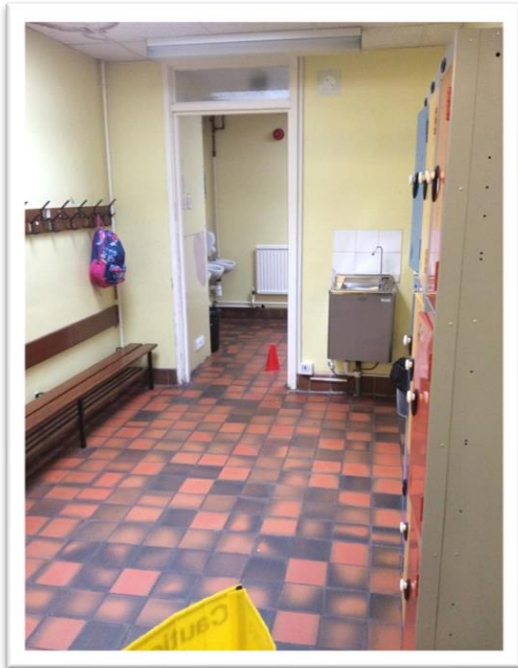


Miss Hierons
Teaching Assistant

All our fantastic adults are at school to support you.



Cloakrooms and Lockers



There are some lockers for Year 6 children to use. Otherwise we have cloakrooms for coats, PE bags and school bags to be stored.



Class 9 Classroom





Class 10 Classroom





Class 11 Classroom





School Rules



Adults in school will help you to remember our school expectations.



Zones of Regulation

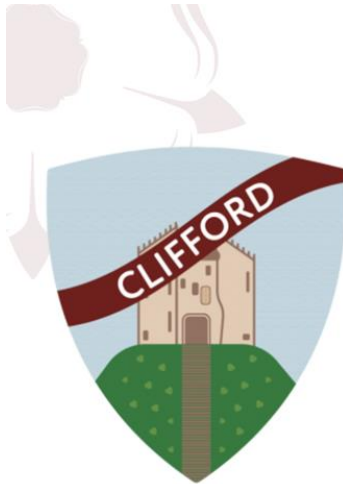


As a whole school, we use the Zones of Regulations to help us to understand our feelings; these help us in lessons and at playtimes. We understand that our feelings change throughout the day and, by showing these feelings, adults in school can help us to learn and use strategies to support/regulate our emotions.



House Points

Our House Points



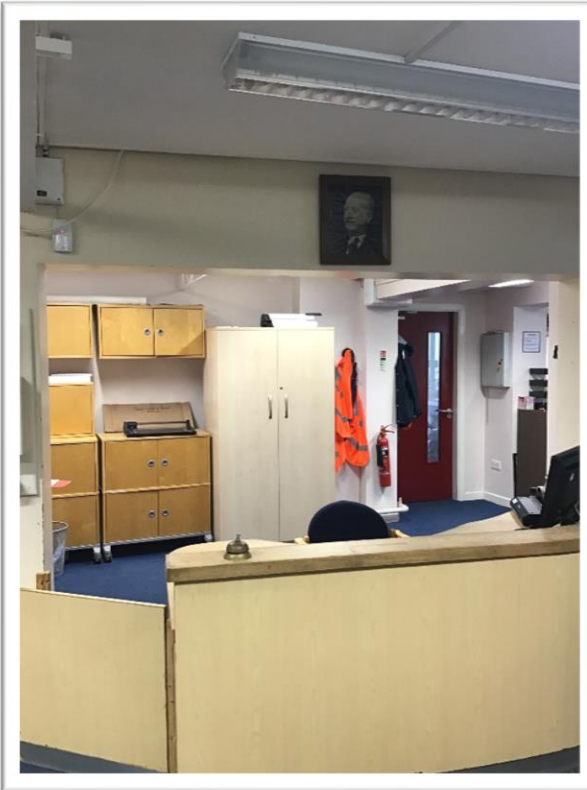
House Points are awarded by all staff to children for a variety of reasons. For example:

- Polite, well-mannered behaviour
- Demonstrating a caring attitude towards peers
- Working to the best of their ability
- Special effort

Year 6 pupils are chosen for the roles of House Captains and Vice House Captains.



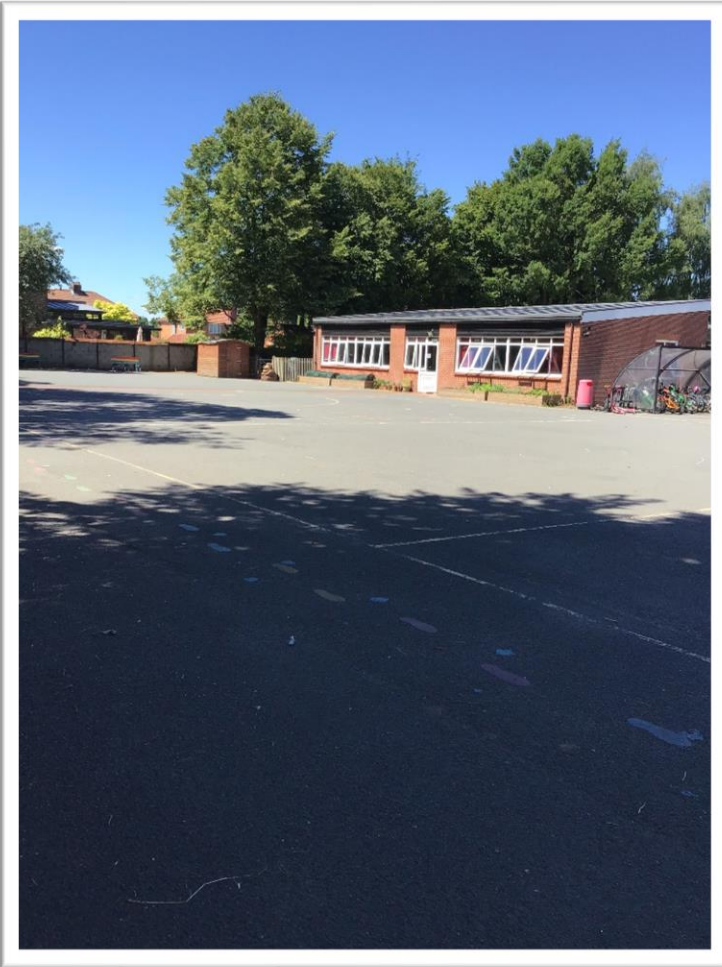
Office/First Aid



If you require first aid or have any medical needs, you would be directed by a member of staff to the office and first aid room where you would be cared for.



Playtime



Depending on the time of year, you will either play on the playground or field at playtimes and/or lunchtimes.



Bike & Scooter Shelter



Your bike or scooter can be stored here
during the school day.



Lunchtime



You will eat your lunch in the hall.
You can have a school dinner or a packed lunch.



School Dinners



Our school dinners are served by the catering team.



Assembly and PE



Our hall is also used for PE lessons and assemblies.





Ralph Butterfield Primary School

A fun place to be and learn

Everyone at Ralph Butterfield Primary School is looking forward to you continuing your learning with us and being part of the Upper Key Stage Two team.